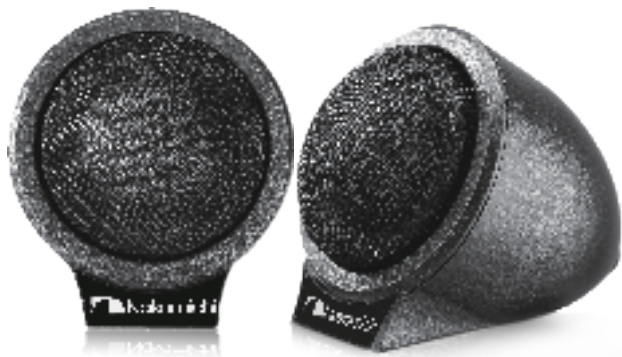


 Nakamichi

N-T39

User Manual



30 MM ASV TWEETER SYSTEM

WARNINGS

This speaker is designed to be mounted on the dashboard of your vehicle.

Do not mount on other places, especially movable parts such as the sun visor and the airbag.

Install the speaker to the position where it does not obstruct safety drive.

When mounting the speaker, fix the speaker firmly with supplied screws by using both supplied spacer and brackets.

When you attach the speaker to the dashboard with screws, make sure not to damage the electrical wiring inside the dashboard.

During daily use, check the speaker sometimes whether it is fixed firmly.

Loose attachment is very dangerous.

PRECAUTIONS

Before connecting the speaker to the DVD/CD receiver or amplifier, confirm that the DVD/CD receiver or amplifier has been turned off. The click noise generated by the connection if the DVD/CD receiver or amplifier is on may damage the speakers.

Make sure the setting of the crossover frequency on the DVD/CD receiver or amplifier is more than 1.2 kHz; otherwise the sound may be distorted and the speaker may be damaged by internal heat buildup.

Do not overload the speakers by excessive input. The N- power of the N-T39 is 12W.

Any excessive input may damage the speakers.

The N-T39 has an impedance of 6Ω.

When cleaning the speaker, use a soft cloth and wipe the surface gently. Do not apply thinner or solvent.

USER MANUAL

Install the speaker to the dashboard of your vehicle as illustrated below.

It is recommended to have the speaker system installed by a qualified technician.

BEFORE INSTALLING THE SPEAKER TO YOUR VEHICLE

Prepare a screw driver, clean the place to install, to remove humidity, dust and stains.

Join the supplied parts to the speaker as illustrated.

Use flat countersunk screws to attach the brackets.

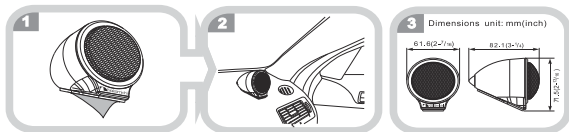
Detach the sheet from the spacer and place the speaker on the center position of the dashboard where it does not obstruct driver's sight.

Fix the speaker with binding screws firmly.

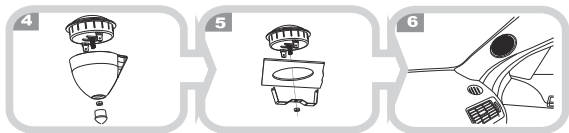
CAUTION

If the speaker is installed improperly, it may come off from the dashboard during driving, causing injury or accident.

SURFACE MOUNTING:



FLUSH MOUNTING:

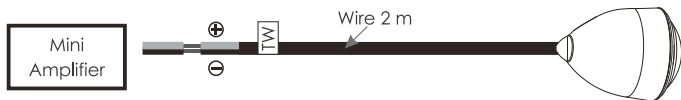


CONNECTION

Connect the tweeter to the tweeter terminals of the DVD/CD receiver or amplifier.

CAUTION

Route the speaker cord so that it does not obstruct safety drive.



If a kit is necessary for your car, consult your telephone directory for the nearest car audio speciality shop.

WHAT IS IN THE BOX

Check and identify the contents of your package:

1. Tweeter x 2pcs

2. User Manual x 1pc

3. Bracket 67 x 25 x 10mm x 2

SPECIFICATIONS

30mm Neodymium Magnet Silk Dome Tweeter	Impedance:	6Ω
N-power:	15 Watts	Voice Coil: ASVΦ25.5mm
Peak Power:	75 Watts	Magnet Mass: 10.6 Oz (330g)
Sensitivity(dB/W/m):	88±3dB	Dimensions: 61.6 x 71.5 x 82.1mm
Frequency Response:	1.2kHz-20kHz	Net Mass (1set): Approx. 0.5 kg

Design and specifications are subject to change without notice.



CONNECT WITH US ONLINE TO EXPLORE NAKAMICHI'S COMPLETE RANGE,
INSTRUCTIONS & SOFTWARE DOWNLOADS AND WARRANTY REGISTRATION.

WWW.NAKAMICHICARAUDIO.COM

 [nakamichi.global](https://www.facebook.com/nakamichi.global)  [nakamichi.caraudio](https://www.instagram.com/nakamichi.caraudio)

Made in China | 中國製造